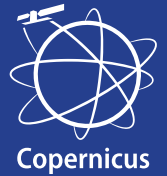




# Copernicus for Citizens



## What data?

**6am.** You wake up in the morning and would like to go out for a run. You live in a big city, and you know that pollution and small particles from car exhausts may cause allergies and diseases. You choose a healthier jogging route through the city park, where you are pretty sure you will breathe better air. Copernicus is able to measure a wide range of gases to inform us about the air we breathe.

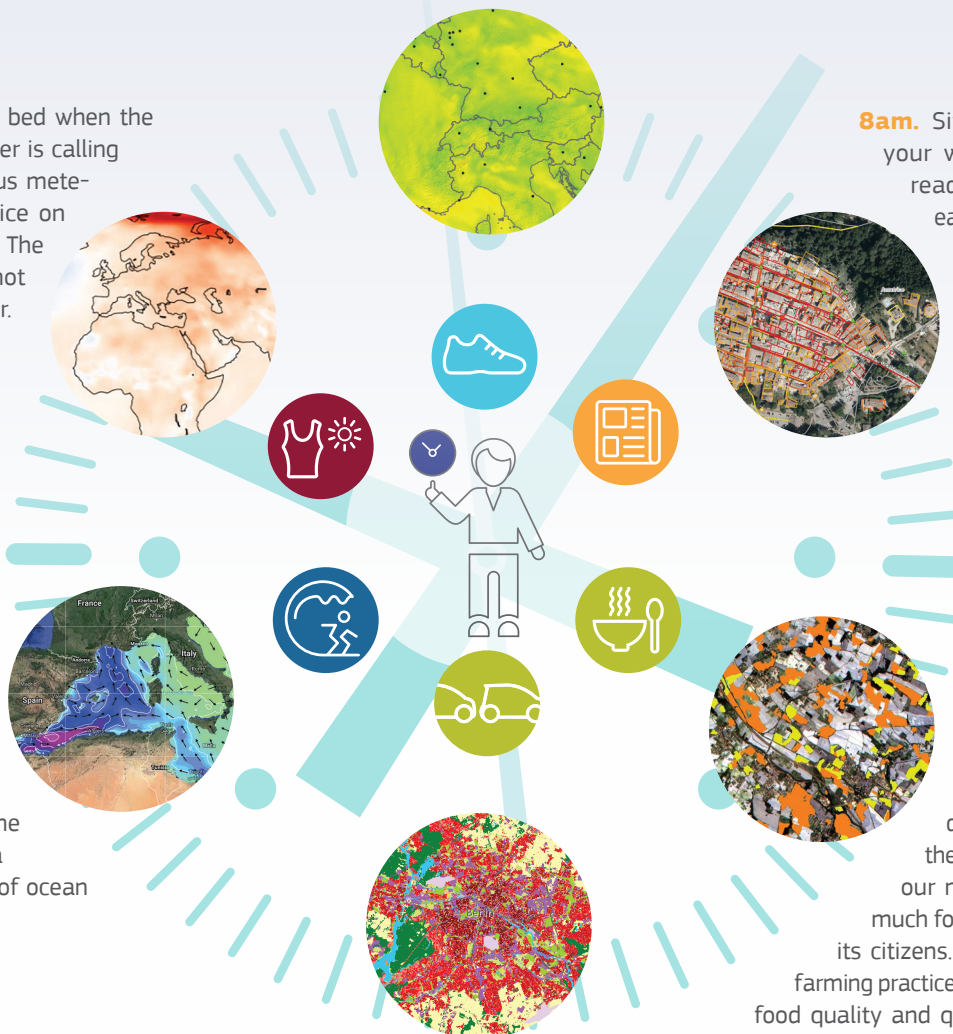
**11pm.** You're going to bed when the phone rings. Your mother is calling as usual, giving precious meteorological related advice on how to dress tomorrow. The weather is incredibly hot for this time of the year. Satellites are currently the main data and information collection tool of climate and environmental data.

Dreaming about your holidays next week, you think about surfing and diving at your favorite beach. You imagine the water, crystal clear and warm. Copernicus Marine Environment provides a continuous monitoring of ocean parameters.

**8am.** Sitting in the metro on your way to the office, you read the news about the earthquake in central Italy. Copernicus Emergency Management Service is used for rapid mapping and supports players in the field of crisis management.

**1pm.** At lunchtime, in your office canteen, today's special is vegetable soup and fruit salad. In our daily lives, we don't even think about the complex chain beyond our menu items and how much food a city needs to feed its citizens. Policies in support of farming practices are vital to guarantee food quality and quantity. Satellite data provides important information in this field, such as if and where water and fertilisers should be distributed.

**6pm.** It's the evening, a colleague picks you up for a ride home. A traffic jam is blocking you in the middle of the city. In rush hour, the number of cars is increasing and you've read somewhere it will double by 2050. Copernicus can help European municipalities to face these challenges by providing information on urban growth, urban green areas and waste management.



## Where?

Visit [copernicus.eu/](http://copernicus.eu/) to get started.

Copernicus Sentinel data and service information are disseminated under a free, full and open data policy. Free access is provided under predefined technical conditions through Copernicus dissemination platforms.

Visit the 6 Copernicus services landing pages to find more on the service portfolios and get access to the service platforms:

- **Copernicus Marine Environment Monitoring Service (CMEMS):** [marine.copernicus.eu](http://marine.copernicus.eu)

- **Copernicus Atmosphere Monitoring Service (CAMS):** [atmosphere.copernicus.eu](http://atmosphere.copernicus.eu)
- **Copernicus Climate Change Service (C3S):** [climate.copernicus.eu](http://climate.copernicus.eu)
- **Copernicus Emergency Management Service (EMS):** [emergency.copernicus.eu](http://emergency.copernicus.eu)
- **Copernicus Land Monitoring Service:** [land.copernicus.eu/](http://land.copernicus.eu/)
- **Copernicus Security:** [www.copernicus.eu/main/security](http://www.copernicus.eu/main/security)

## Other information

You can subscribe to Copernicus Observer, the e-magazine that reports every three months on Copernicus-related activities. There you will find concrete achievements, ongoing activities and projects

and a business corner addressing the development of the Copernicus market. [newsletter.copernicus.eu/](http://newsletter.copernicus.eu/)